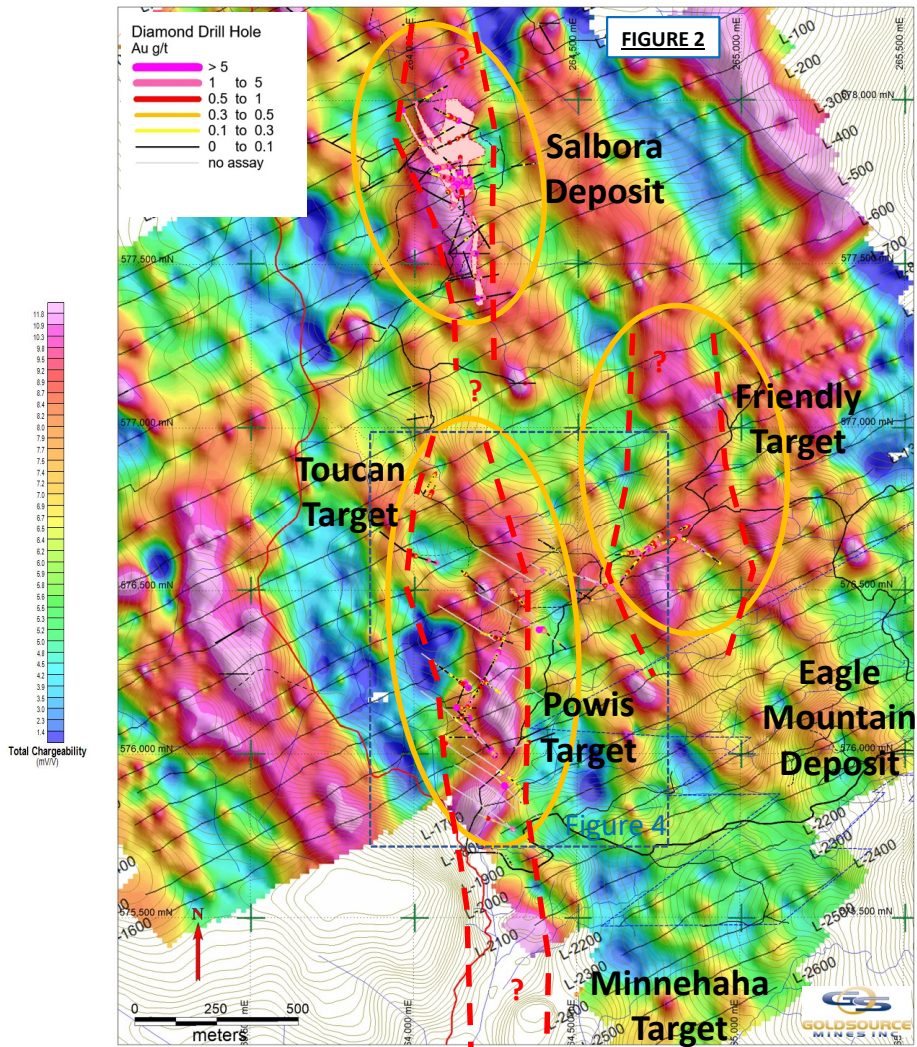


IP Gradient Array Survey – Chargeability



Geology of the Salbora - Powis Corridor

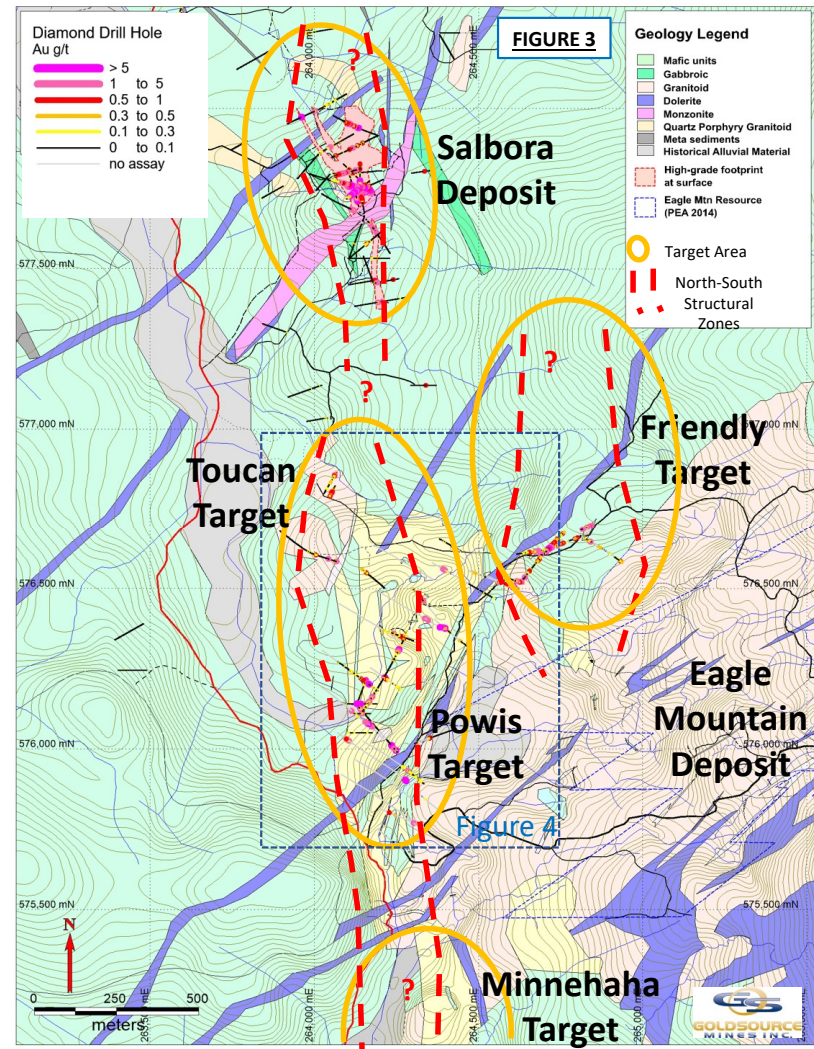


Figure 4
Diamond Drill Holes & Historical Auger Summary
Powis & Toucan Targets

**Diamond Drill Holes - Dec 2019
 Significant Intervals**

Hole ID ⁽¹⁾	From (m)	To (m)	Drilled Interval (m) ⁽²⁾	Au (gpt) ⁽³⁾
EME19-027	10.0	11.5	1.5	0.72
	29.5	34.0	4.5	0.76
	111.0	112.5	1.5	1.87
	160.5	163.5	3.0	0.97
EME19-028	7.0	8.5	1.5	11.97
EME19-029	38.5	41.5	3.0	0.50
EME19-090	78.0	79.5	1.5	0.67
EMD19-096	81.0	91.5	10.5	9.94
Incl.	81.0	82.5	1.5	64.80
Incl.	88.5	90.0	1.5	3.21
	118.5	120.0	1.5	2.76
EMD19-098	43.5	48.0	4.5	1.33
	94.5	96.0	1.5	10.91

Note: All numbers rounded.

- (1) EME defines diamond core holes drilled by Orbit Garant Drilling Inc. EMD defines diamond core holes drilled in-house.
- (2) True widths are 80 to 100% of drilled widths.
- (3) Cutoff grade of 0.3 gpt Au.

**Historic Drill Holes
 Significant Intervals**

Hole ID	From (m)	To (m)	Drilled Interval (m) ⁽²⁾	Au (gpt) ⁽²⁾	Drilling by Company
EMD08-021	86.0	97.0	11.0	1.77	IAMGOLD
	104.0	106.3	2.3	3.47	
EMD08-035	0.0	7.2	7.2	2.12	IAMGOLD
	117.0	124.0	7.0	1.72	
EMD08-036	134.7	136.0	1.2	2.09	
	29.8	31.0	1.2	3.66	IAMGOLD
	42.0	46.0	4.0	1.82	
	258.0	262.0	4.0	12.22	
	278.0	279.0	1.0	1.03	
	291.0	292.0	1.0	10.40	
EHD02	67.0	79.0	12.0	2.10	Geological Survey
EHD03	203.8	231.8	28.0	1.05	Geological Survey
EHD08	210.7	212.7	2.0	1.07	Geological Survey
	224.7	226.7	2.0	1.08	
	276.7	278.7	2.0	7.00	
EHD09	51.4	53.4	2.0	2.52	Geological Survey
	59.4	61.4	2.0	1.26	
EHD14	45.5	61.5	16.0	0.64	Geological Survey
	317.5	321.5	4.0	14.65	
EHD15	170.4	172.4	2.0	4.06	Geological Survey
	246.4	252.4	6.0	4.75	
	258.4	262.4	4.0	25.23	
	278.4	282.4	4.0	2.99	
EM018	15.0	22.5	7.5	0.54	Golden Star
EM019	8.5	37.6	29.1	0.51	Golden Star
Coolie Adit (Toucan)	14.0	37.0	23.0	18.50	IAMGOLD
Incl.	15.0	34.0	19.0	22.30	

Note: All numbers rounded.

- (1) True widths variable depending on hole's inclination.
- (2) Cutoff grade of 0.3 gpt Au.

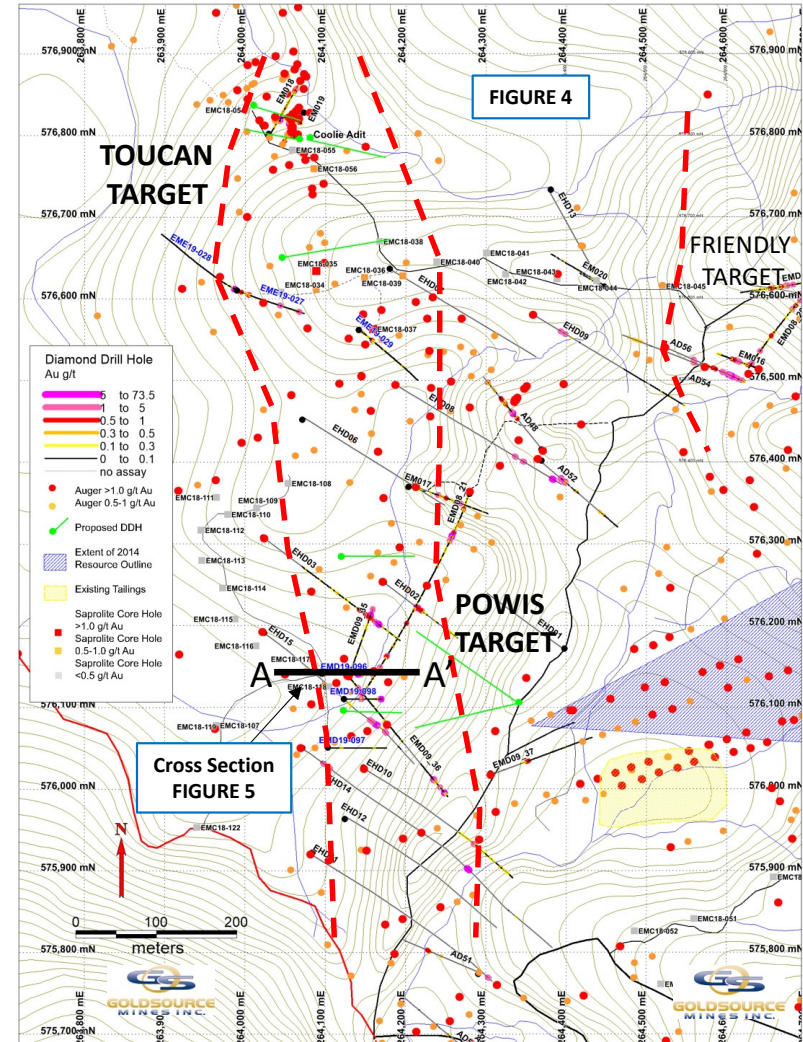
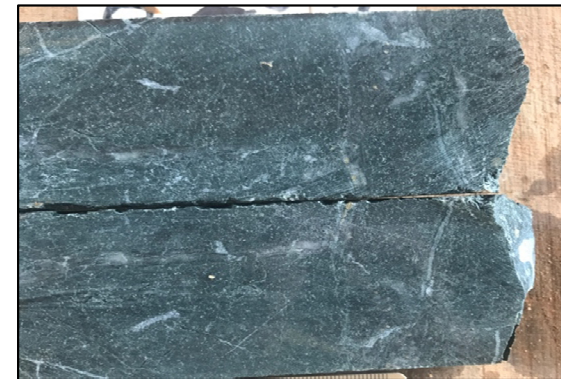
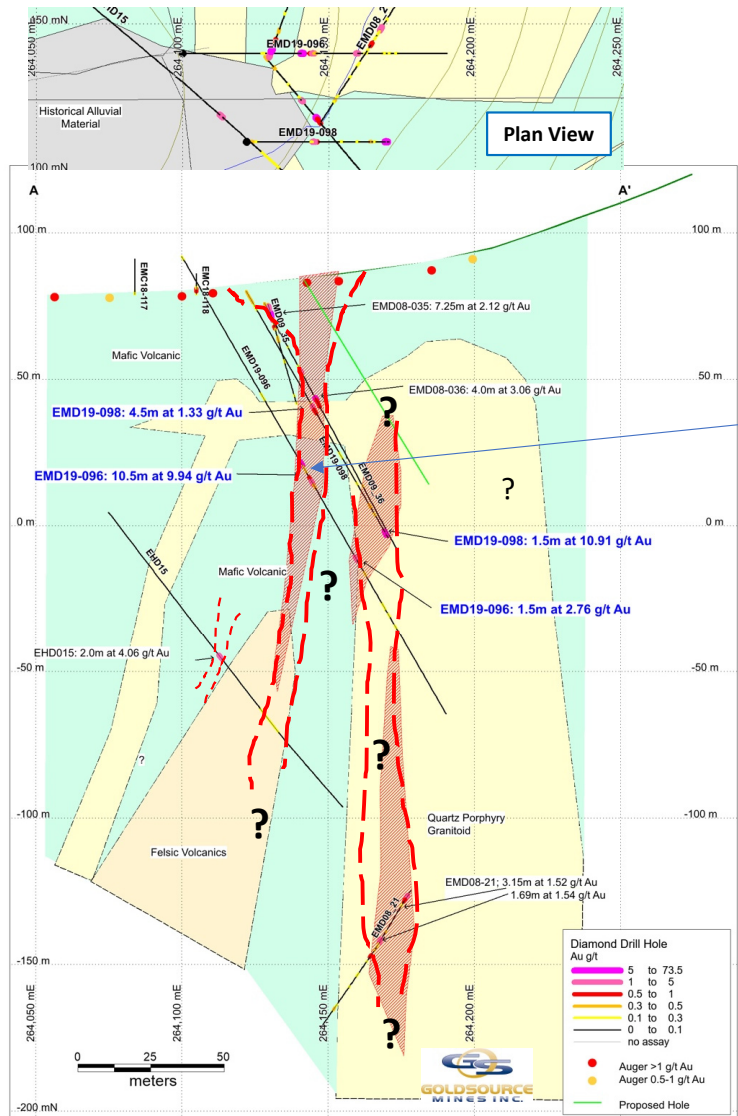


Figure 5
Cross Section of Powis Target
Looking North



EMD19-096
 81.0 to 82.5m
 64.80 gpt Au



EMD19-096
 88.5 to 90.0m
 3.21 gpt Au

Note: All numbers rounded.