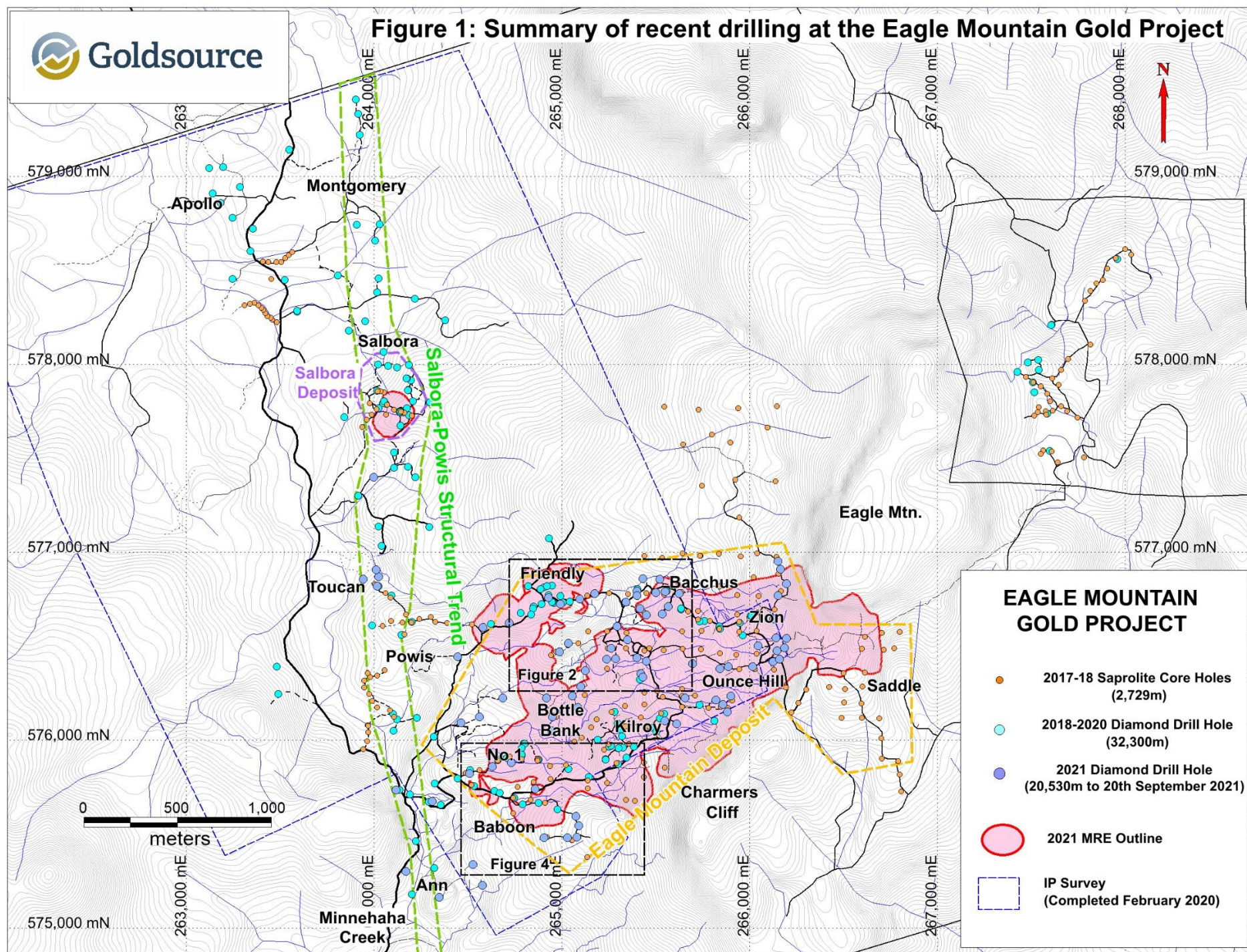
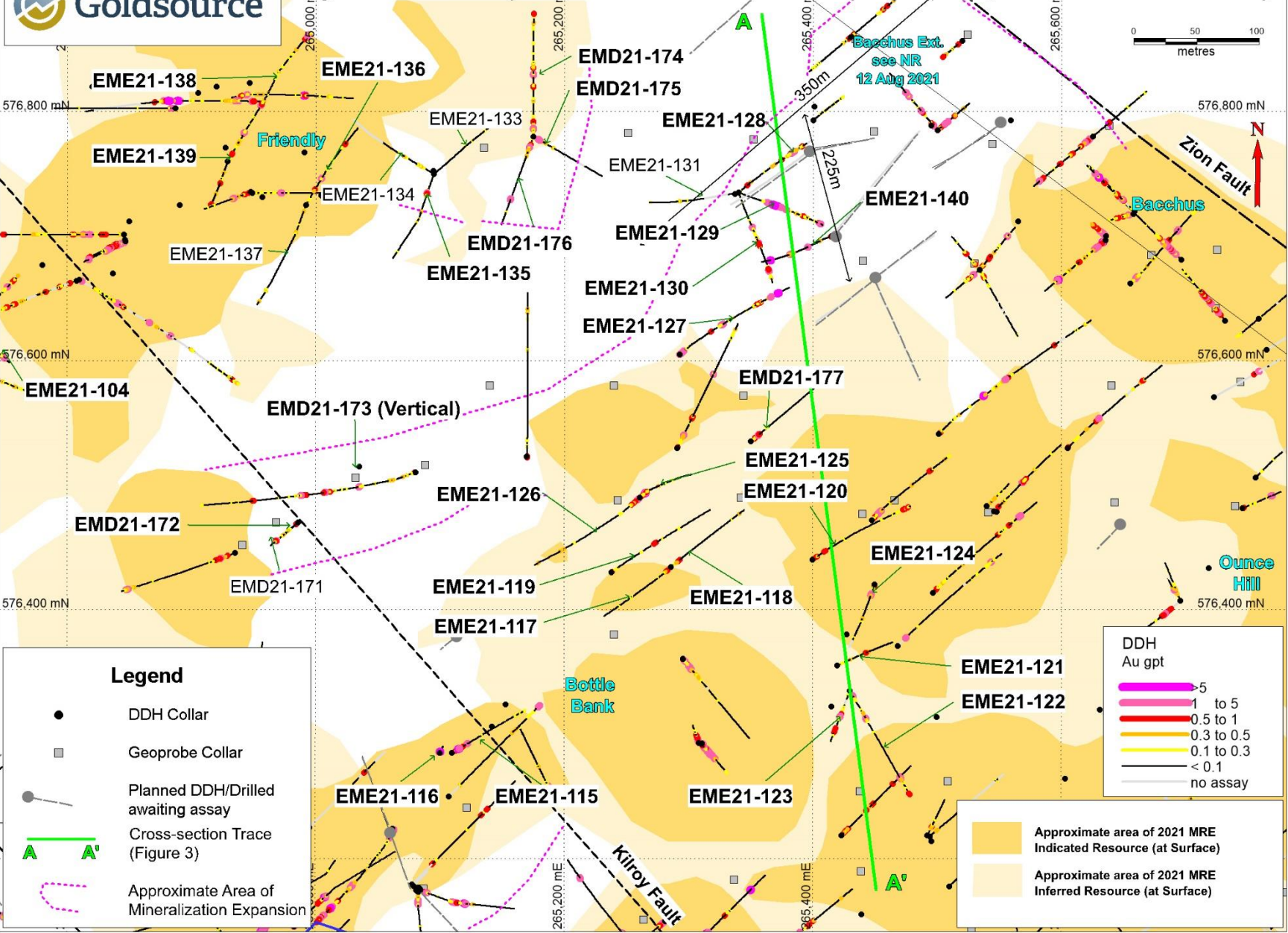


**Figure 1: Summary of recent drilling at the Eagle Mountain Gold Project**


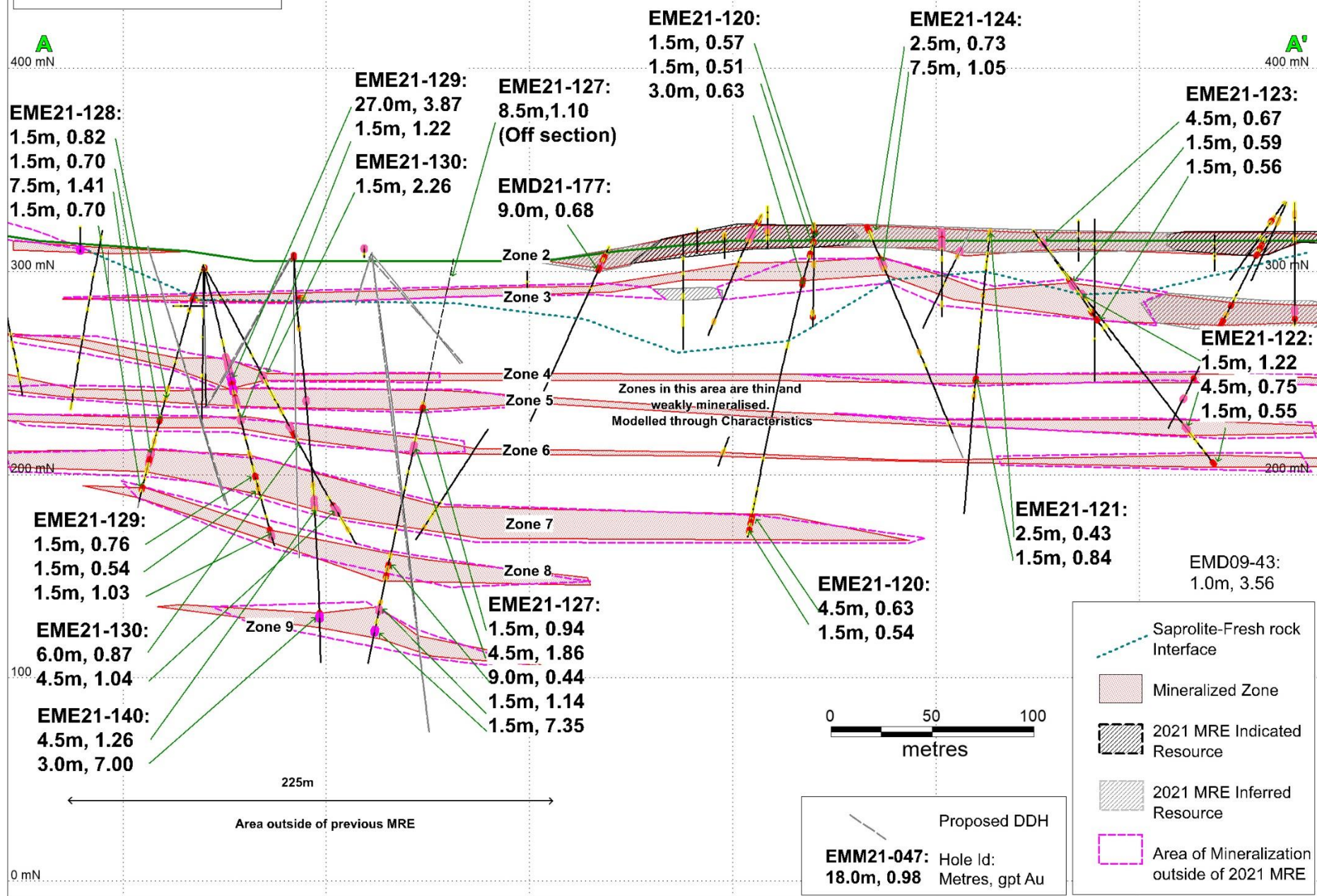
**Figure 2 : Friendly-Bacchus / Bottle Bank - Infill and Expansion Drill Summary**

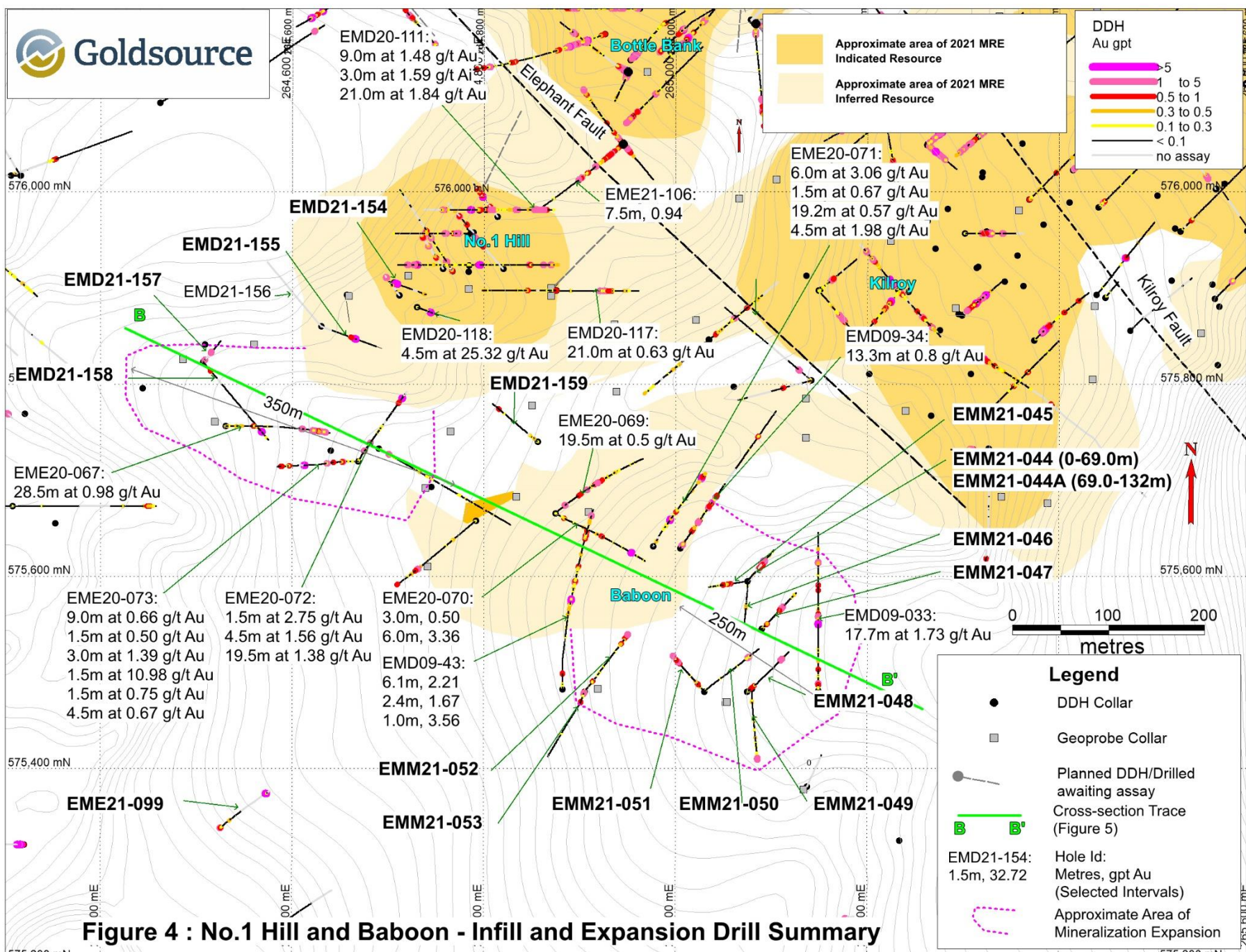


Hole ID	Drilled Interval (m)	Au (gpt)
EMD21-172	1.5	0.46
	3.0	0.91
	3.0	1.00
EMD21-173	1.5	0.55
	4.5	0.94
	1.5	0.84
	1.5	5.68
EMD21-174	3.0	0.98
	1.5	0.56
	1.5	0.50
	1.5	1.17
	3.0	0.51
	4.5	1.86
	1.5	0.56
	9.0	0.44
EMD21-175	7.5	1.70
EMD21-176	7.5	0.70
	1.5	1.29
EMD21-177	9.0	0.68
EME21-104	1.5	0.76
	1.5	0.60
	6.0	1.09
	1.5	0.52
	1.5	2.72
	9.0	1.06
	1.5	0.54
EME21-115	<b>9.0</b>	<b>1.66</b>
	1.5	1.03
EME21-130	1.5	2.26
	1.5	1.01
	6.0	0.87
EME21-116	<b>4.5</b>	<b>4.22</b>
EME21-117	4.5	0.62
EME21-118	6.0	0.52
EME21-119	1.0	0.94
	3.0	0.73
EME21-120	1.0	0.57
	1.5	0.51
	3.0	0.63
	4.5	0.63
	1.5	0.54
EME21-121	2.5	0.43
	1.5	0.84
EME21-122	1.5	1.22
	1.5	0.46
	4.5	0.75
	1.5	0.55

Hole ID	Drilled Interval (m)	Au (gpt)
EME21-123	4.5	0.67
	1.5	0.59
	1.5	0.56
EME21-124	2.5	0.73
	7.5	1.05
EME21-125	8.5	0.41
	<b>6.0</b>	<b>3.75</b>
EME21-126	4.0	0.99
	9.0	0.52
EME21-127	<b>8.5</b>	<b>1.10</b>
	1.5	0.94
	4.5	1.86
	9.0	0.44
	1.5	1.14
	1.5	7.35
EME21-128	1.5	0.82
	1.5	0.70
	7.5	1.41
	1.5	0.70
EME21-129	<b>27.0</b>	<b>3.87</b>
	1.5	1.22
	1.5	0.76
	1.5	0.54
	1.5	1.03
EME21-130	1.5	2.26
	6.0	0.87
	4.5	1.04
EME21-135	9.0	0.50
EME21-136	4.5	0.40
	1.5	1.29
	1.5	0.69
	1.5	0.37
EME21-138	1.5	0.58
	3.0	1.80
	4.5	1.02
	4.5	1.02
	<b>10.5</b>	<b>1.51</b>
EME21-139	1.0	0.42
	1.5	0.67
	1.5	0.56
EME21-140	1.5	0.81
	1.5	1.31
	4.5	1.26
	<b>3.0</b>	<b>7.00</b>
incl.	1.5	<b>13.38</b>

**Figure 3 : Friendly-Bacchus / Bottle Bank - Cross-section A-A'  
Looking towards East**





Hole ID	Drilled Interval (m)	Au (gpt)
EMD21-154	1.5	32.72
EMD21-155	1.5	0.86
	3.0	6.22
EMD21-157	1.5	1.33
	1.5	4.33
EMD21-158	1.5	0.69
	3.0	5.29
EMD21-159	1.5	0.68
EMM21-044	19.5	0.81
EMM21-44A	18.0	1.46
EMM21-045	1.5	0.63
	1.5	0.62
	1.5	0.55
	1.5	0.62
EMM21-046	1.5	1.19
EMM21-047	18.0	0.98
	1.5	1.44
EMM21-048	3.0	0.50
	1.5	0.54
	4.5	1.63
EMM21-049	3.0	0.41
	3.0	2.40
EMM21-050	4.5	1.16
EMM21-051	3.0	0.85
	10.5	0.95
	1.5	0.56
	1.5	1.27
EMM21-052	1.5	0.56
	4.5	0.82
EMM21-053	1.5	2.47
	1.5	0.57
EME21-099	2.5	1.18
	1.5	9.11

**Figure 5 : No.1 Hill (South) and Baboon - Cross-section B-B'**  
Looking towards North-East

400 mN

