



Figure 1: Summary Of Recent Drilling At The Eagle Mountain Gold Project

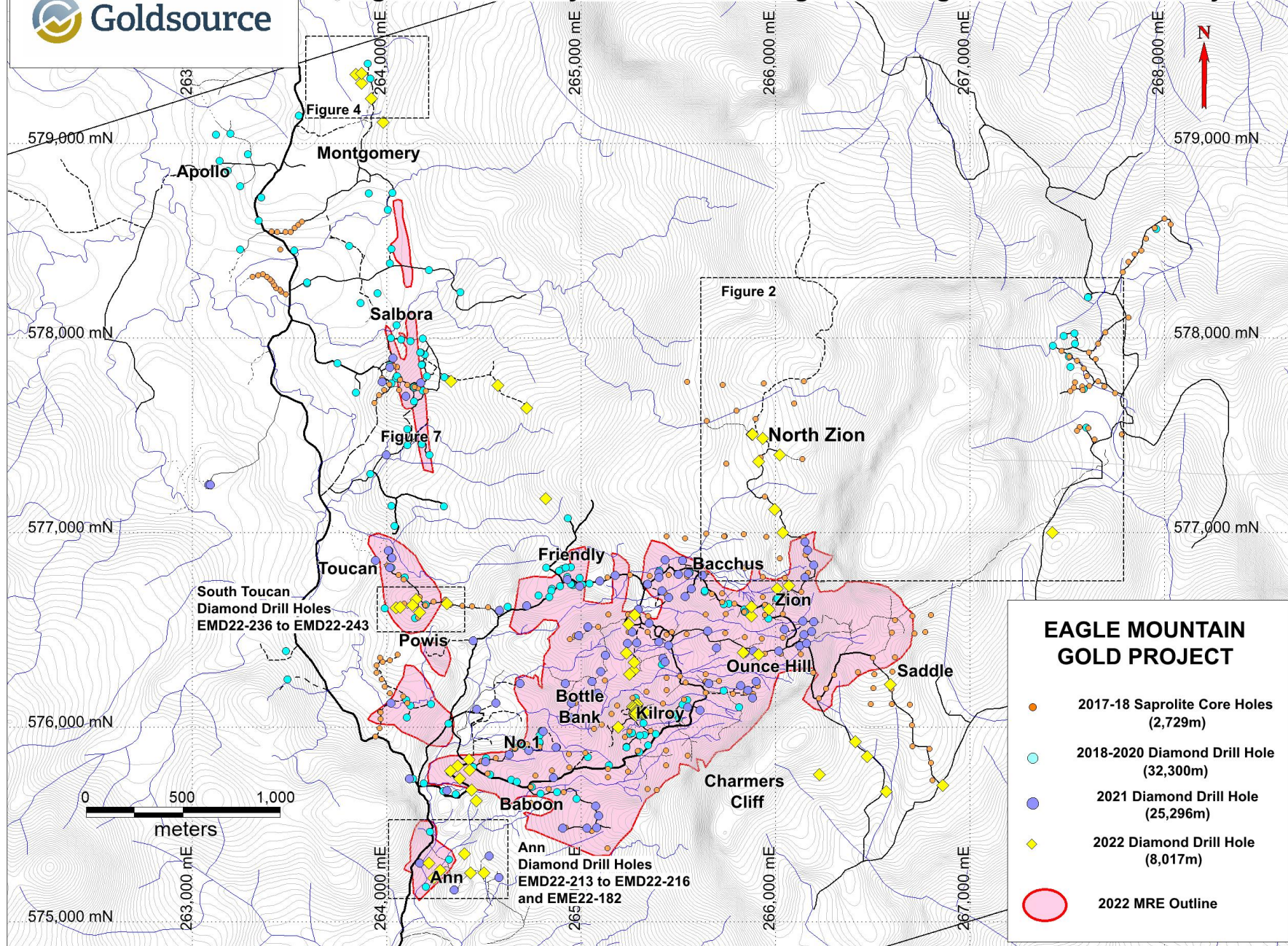
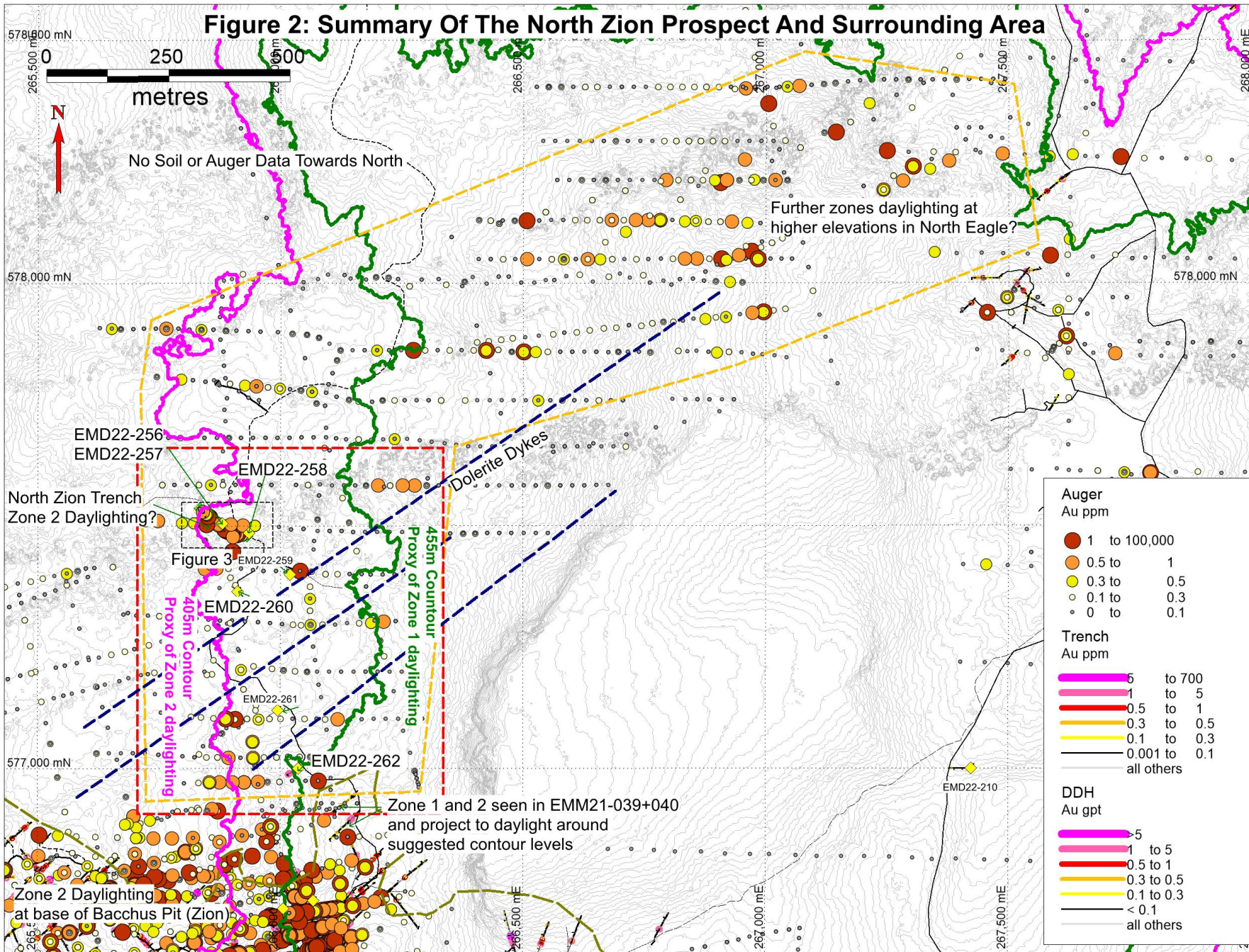


Figure 2: Summary Of The North Zion Prospect And Surrounding Area



| Hole ID ⁽¹⁾ | From (m) | To (m) | Drilled Interval (m) ⁽²⁾ | Au (gpt) ⁽³⁾ | ETW |
|------------------------|----------|--------|-------------------------------------|-------------------------|------|
| EMD22-256 | 0.0 | 6.0 | 6.0 | 0.63 | 4.50 |
| incl | 0.0 | 1.5 | 1.5 | 1.40 | 1.14 |
| | 15.0 | 27.0 | 12.0 | 2.04 | 9.20 |
| Incl | 15.0 | 22.5 | 7.5 | 3.10 | 5.75 |
| | 42.0 | 43.5 | 1.5 | 0.57 | 1.14 |
| EMD22-257 | 0.0 | 1.5 | 1.5 | 1.42 | 1.14 |
| EMD22-258 | 0.0 | 1.5 | 1.5 | 0.72 | 1.30 |
| EMD22-260 | 22.5 | 24.0 | 1.5 | 0.51 | 1.40 |
| EMD22-262 | 40.5 | 46.5 | 6.0 | 1.34 | 5.19 |

- North Zion Prospect
- New Prospective area
- Contour Proximal to mineralized Zone 2 (Fig. 3)
- Eagle Mountain Resource Boundary

Figure 3a: Plan Of Trench NZTR22-005

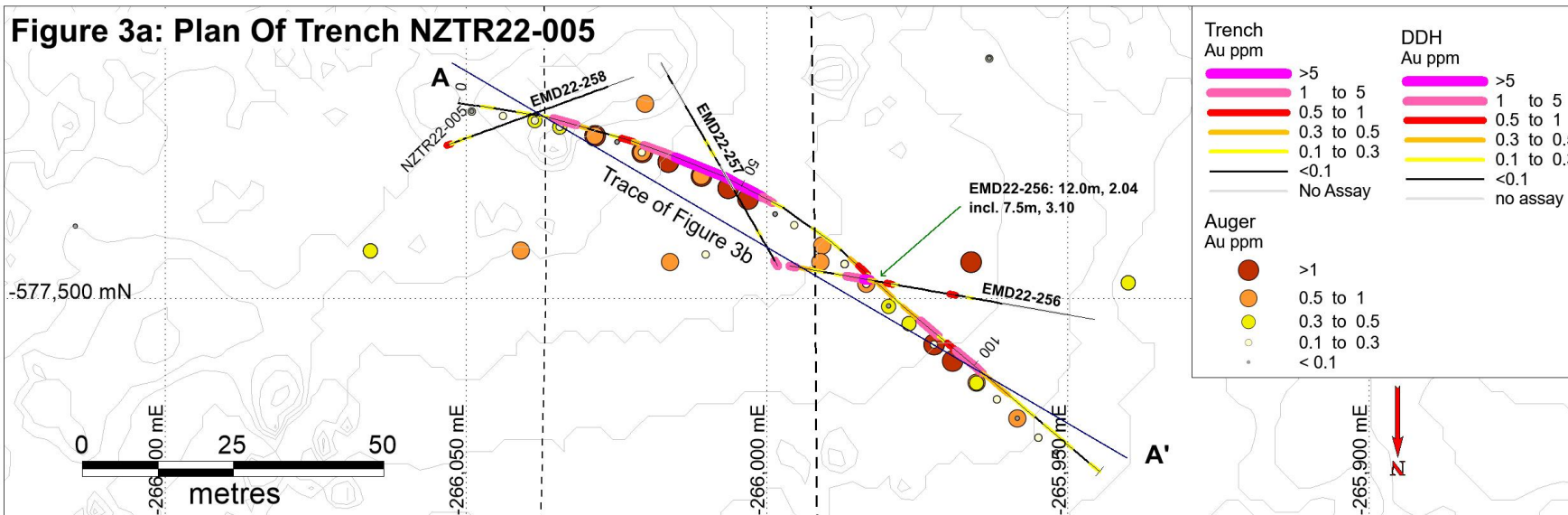
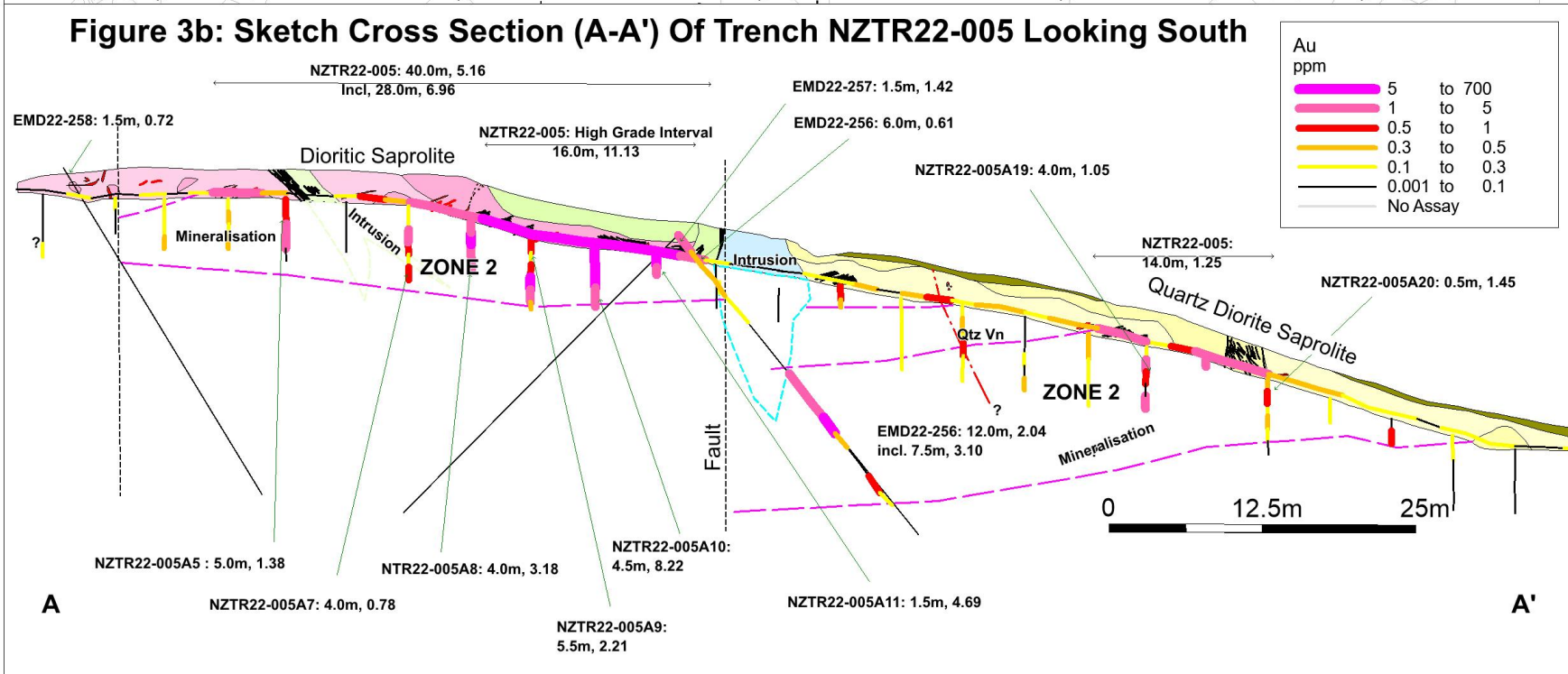


Figure 3b: Sketch Cross Section (A-A') Of Trench NZTR22-005 Looking South



Trench Intersections

| Hole ID ⁽¹⁾ | From (m) | To (m) | Drilled Interval (m) ⁽²⁾ | Au (gpt) ⁽³⁾ |
|------------------------|----------|--------|-------------------------------------|-------------------------|
| NZTR22-005 | 16.0 | 56.0 | 40.0 | 5.16 |
| Incl | 28.0 | 56.0 | 28.0 | 6.95 |
| Incl | 38.0 | 54.0 | 16.0 | 11.13 |
| | 74.0 | 76.0 | 2.0 | 0.67 |
| | 88.0 | 102.0 | 14.0 | 1.25 |

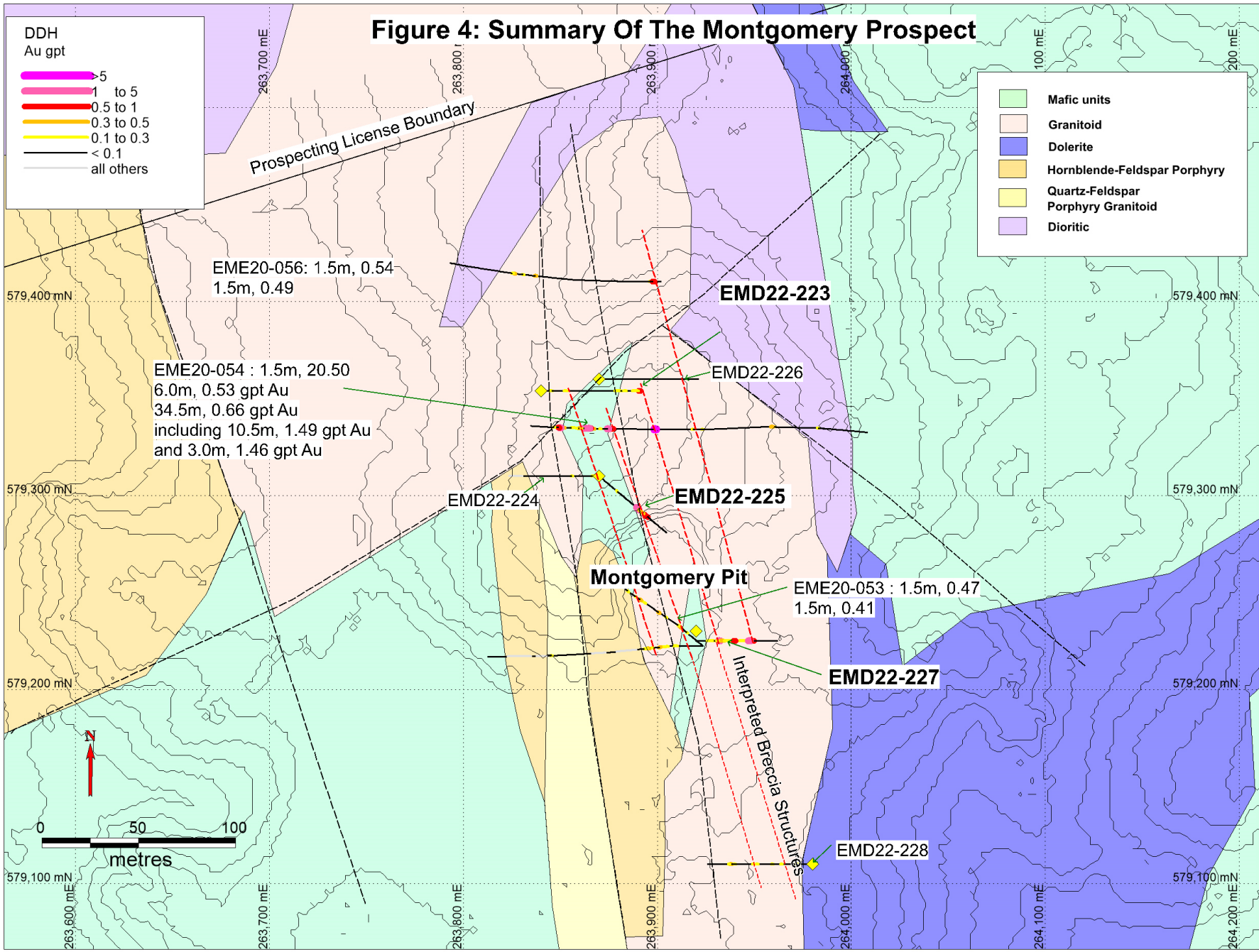
Diamond Drill Hole Intersections

| Hole ID ⁽¹⁾ | From (m) | To (m) | Drilled Interval (m) ⁽²⁾ | Au (gpt) ⁽³⁾ | ETW |
|------------------------|----------|--------|-------------------------------------|-------------------------|------|
| EMD22-256 | 0.0 | 6.0 | 6.0 | 0.63 | 4.50 |
| incl | 0.0 | 1.5 | 1.5 | 1.40 | 1.14 |
| | 15.0 | 27.0 | 12.0 | 2.04 | 9.20 |
| Incl | 15.0 | 22.5 | 7.5 | 3.10 | 5.75 |
| | 42.0 | 43.5 | 1.5 | 0.57 | 1.14 |
| EMD22-257 | 0.0 | 1.5 | 1.5 | 1.42 | 1.14 |
| EMD22-258 | 0.0 | 1.5 | 1.5 | 0.72 | 1.30 |

Auger Intersections

| Hole ID | From (m) | To (m) | Interval (m) | Au (gpt) |
|---------------|----------|--------|--------------|----------|
| NZTR22-005A3 | 3.0 | 4.0 | 1.0 | 0.30 |
| NZTR22-005A4 | 0.0 | 4.0 | 4.0 | 0.30 |
| NZTR22-005A5 | 0.0 | 5.0 | 5.0 | 1.83 |
| NZTR22-005A7 | 2.0 | 6.0 | 4.0 | 0.88 |
| NZTR22-005A8 | 0.0 | 4.0 | 4.0 | 3.18 |
| NZTR22-005A9 | 0.0 | 5.5 | 5.5 | 2.21 |
| NZTR22-005A10 | 0.0 | 4.5 | 4.5 | 8.22 |
| NZTR22-005A11 | 0.0 | 1.5 | 1.5 | 4.69 |
| NZTR22-005A14 | 1.0 | 1.5 | 0.5 | 0.46 |
| NZTR22-005A16 | 1.0 | 4.0 | 3.0 | 0.33 |
| NZTR22-005A17 | 5.0 | 6.0 | 1.0 | 0.40 |
| NZTR22-005A18 | 0.0 | 4.0 | 4.0 | 0.33 |
| NZTR22-005A19 | 1.0 | 5.0 | 4.0 | 1.05 |
| NZTR22-005A20 | 0.0 | 0.5 | 0.5 | 1.45 |
| NZTR22-005A21 | 0.0 | 5.0 | 5.0 | 0.37 |
| NZTR22-005A23 | 1.0 | 2.0 | 1.0 | 0.60 |

Figure 4: Summary Of The Montgomery Prospect



| Hole ID ⁽¹⁾ | From (m) | To (m) | Drilled Interval (m) ⁽²⁾ | Au (gpt) ⁽³⁾ |
|------------------------|----------|--------|-------------------------------------|-------------------------|
| EMD22-223 | 100.5 | 102.6 | 2.1 | 0.51 |
| EMD22-225 | 39 | 51 | 12 | 1.12 |
| Incl | 39 | 42 | 3 | 2.87 |
| EMD22-227 | 18 | 46.5 | 28.5 | 0.50 |
| Incl. | 18 | 19.5 | 1.5 | 2.21 |
| and | 42 | 46.5 | 4.5 | 1.02 |